



Asset Tracker
POWERED BY

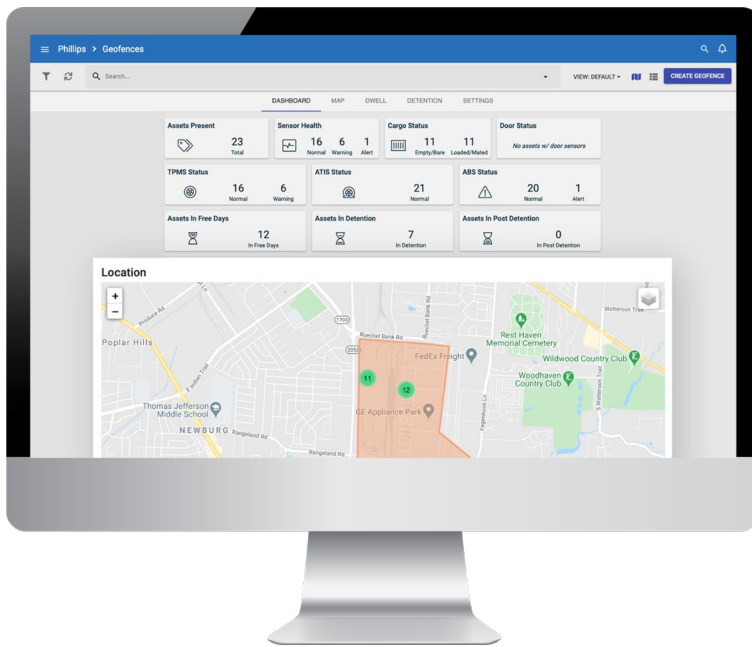
**INSTALLS IN
LESS THAN
10 MINUTES!**

EzTrac™ HE

4G LTE Asset Tracking Gateway

EROAD has partnered with Phillips Connect to provide best in class hardware and a robust platform for real-time tracking, analysis and insights.

Ideal for construction equipment, trailers, and boats. EZTrac™ HE is an asset tracking solution designed for the toughest conditions.



SOLUTION HIGHLIGHTS

- Real-time visibility and simple geofencing
- Automated alerts configurable in the user interface
- Flawless operation in the harshest temperatures (-22°F to 167°F)
- 5 minute reporting when in motion

POWERFUL COST SAVING TOOLS

- Locate equipment in an instant
- Optimize equipment utilization
- Record and measure engine hours
- Analyze battery voltage and performance

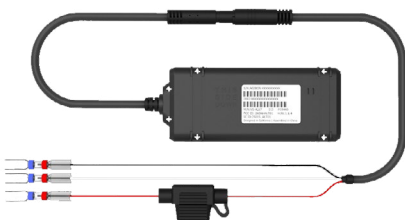
Improve driver uptime and overall ROI with a complete view into your fleet.



Theft Recovery



GPS, Geofencing, Route Tracking



EzTrac™ HE



EzTrac™ HE Installed on asset

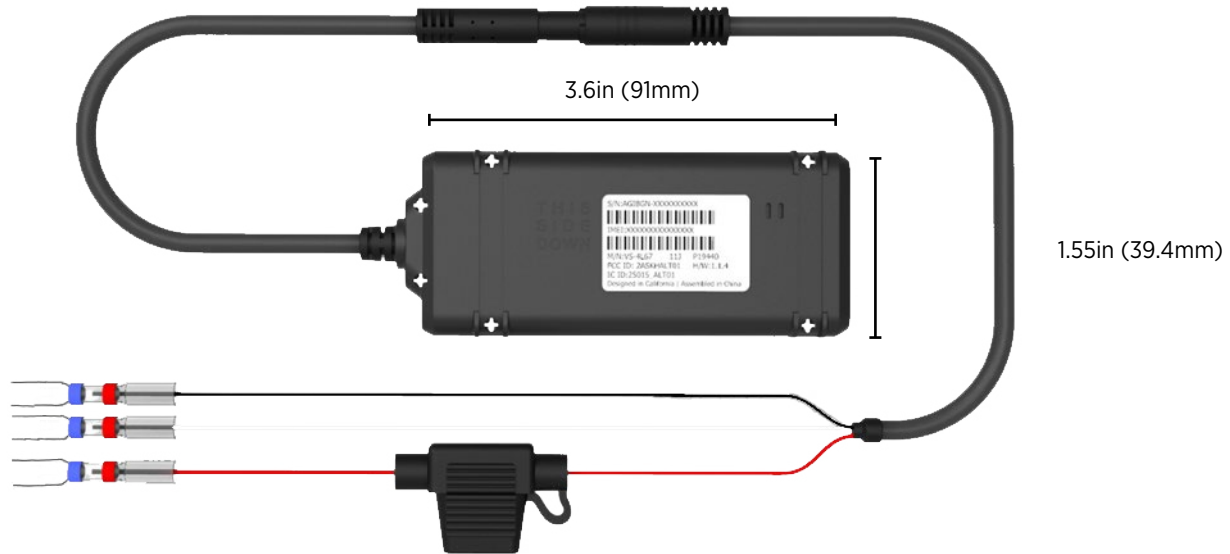


IP67-Rated Weatherproof



10 Minute Installation

EzTrac™ HE Part# 77-6930



CELLULAR TECHNOLOGY

- LTE Cat 1
- HSPA Fallback Bands 2, 5 (TMO)
- Integrated high sensitivity antenna
- Auto register to packet network

APPROVALS

- FCC 47 CFR Part 15, Part 22, and Part 24; IC
- RoHS2 and WEEE Certification
- PTCRB Certification

GPS FUNCTIONALITY

Channels	56
Tracking Sensitivity	-162 dBm
Acquisition Sensitivity	-148 dBm
Location Accuracy	2.5 CEP

POWER MANAGEMENT

Battery Capacity	80mAh
Operating Voltage	6V – 28V
Voltage Over-protected TVS 36V and Fused	
Power Consumption	
✓ Sleep	< 60mW
✓ Tracking	< 400mW

ENVIRONMENTAL

Operation Temperature	-4°F to 140°F (-20°C to 60°C)
Storage Temperature	-40°F to 185°F (-40°C to 85°C)
Operation Humidity	20% to 90% (non-condensing)
Storage Humidity	10% to 95% (non-condensing)

PHYSICAL

Dimensions	3.6in x 1.55in x .62in (91mm x 39.4mm x 15.7mm)
Weight	0.56 lbs (255g)

Visit www.eroad.com/asset-tracker, or call **1-855-503-7623** for more information.